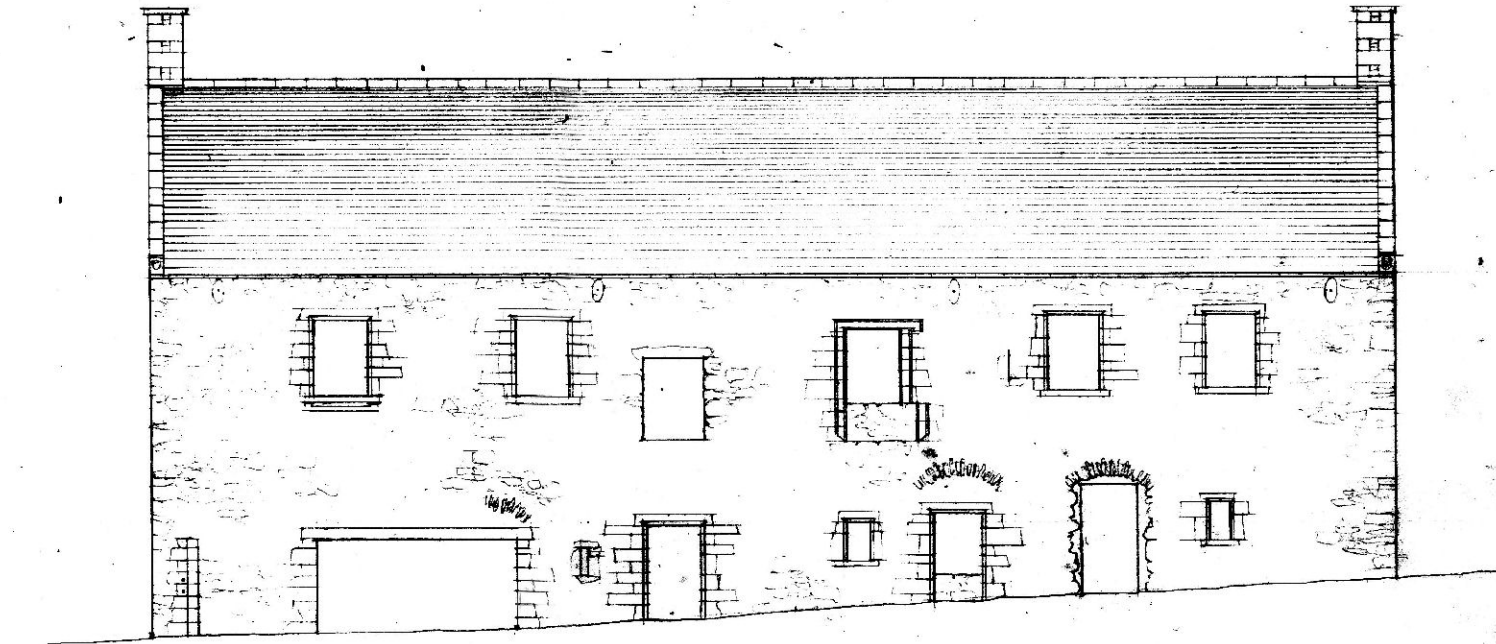
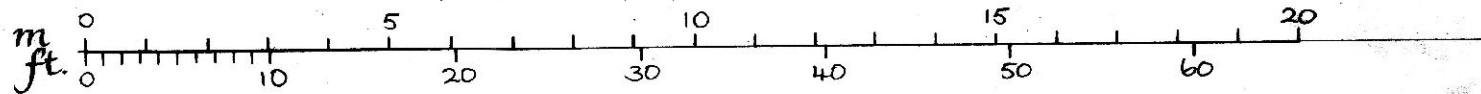


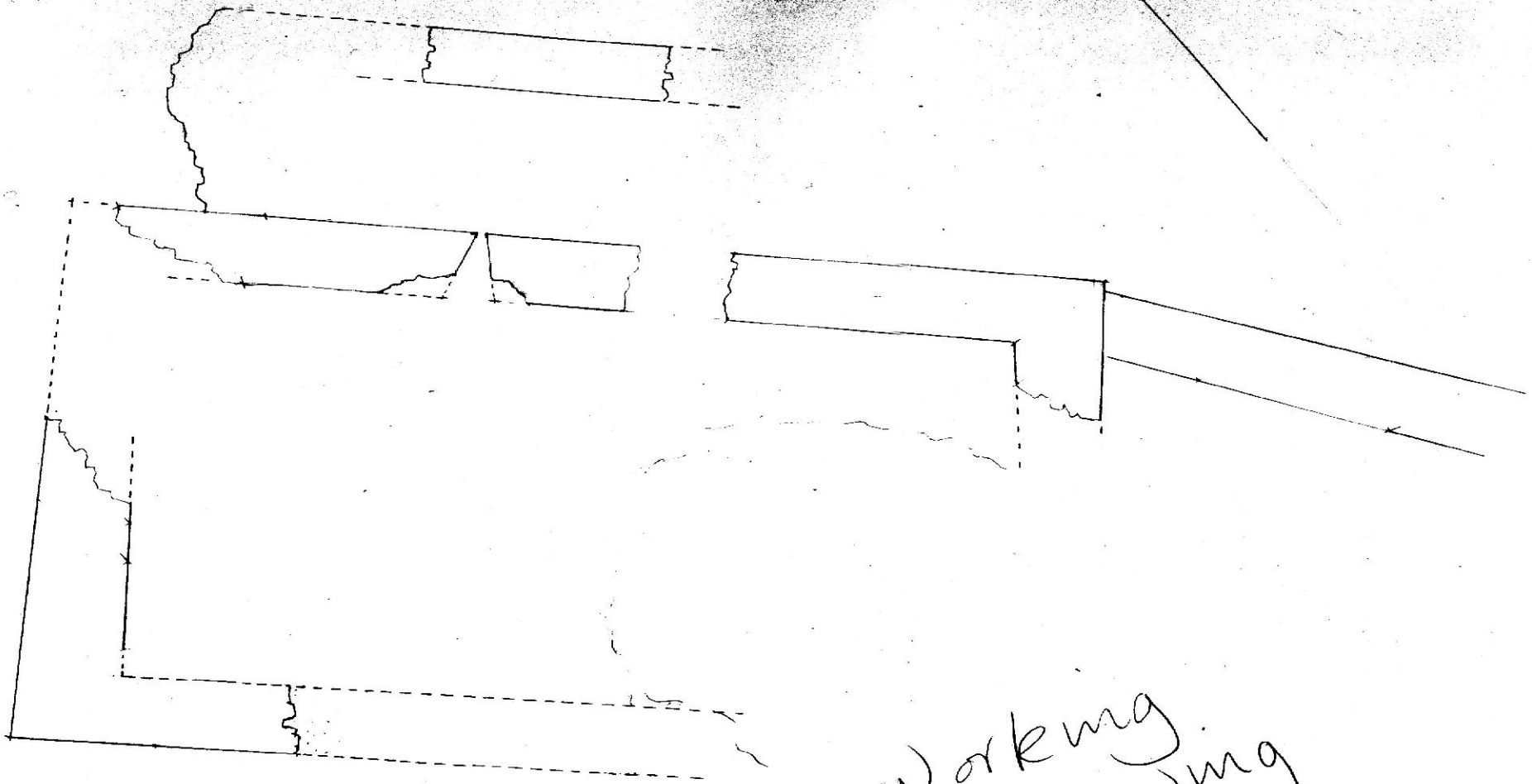
9A57  
Skelbo Castle  
Reconstruction



Elevation looking W.



SKELBO CASTLE, 17th century house surveyed OCT '83 by I.P.T.M., G.S.

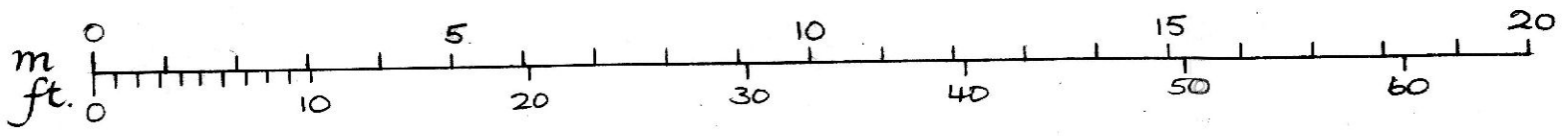


Working  
Drawing

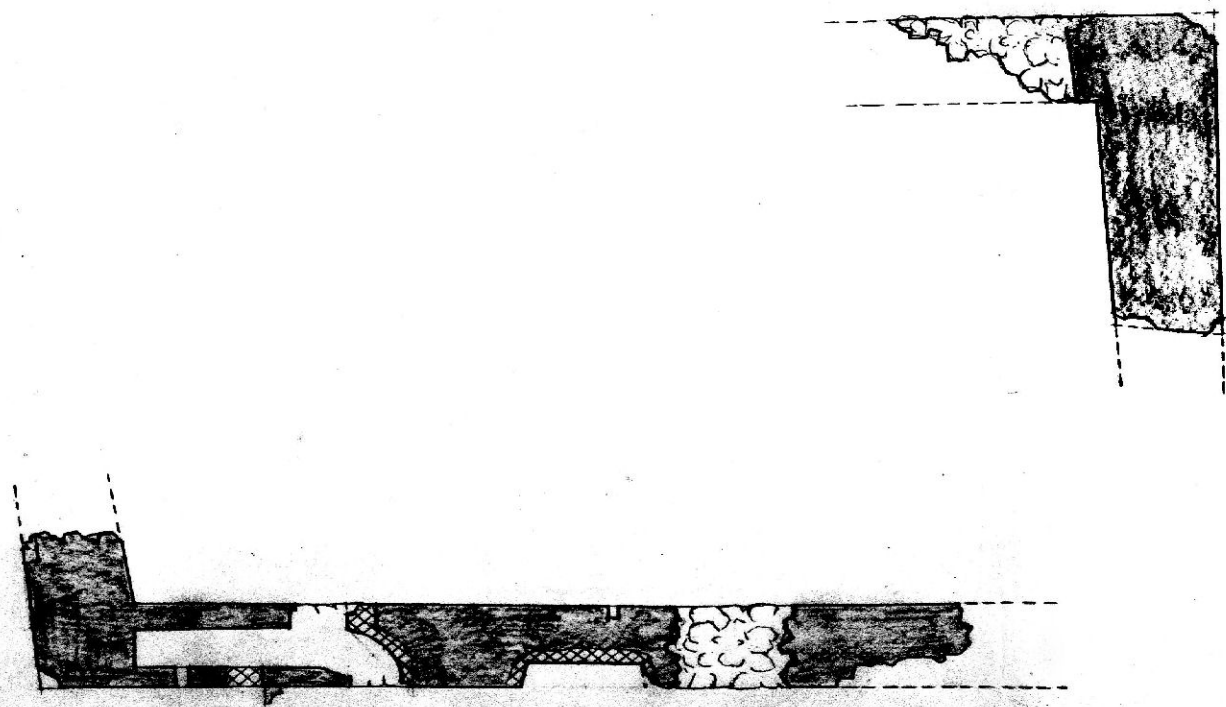
SKELBO CASTLE 1:100  
PLAN & TABLE SURVEY



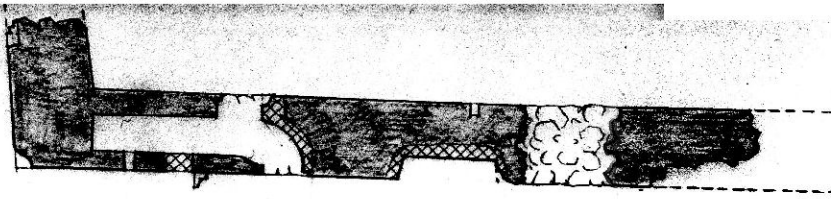
**SKELBO CASTLE** surveyed 13.10.83 by T.M., I.P.



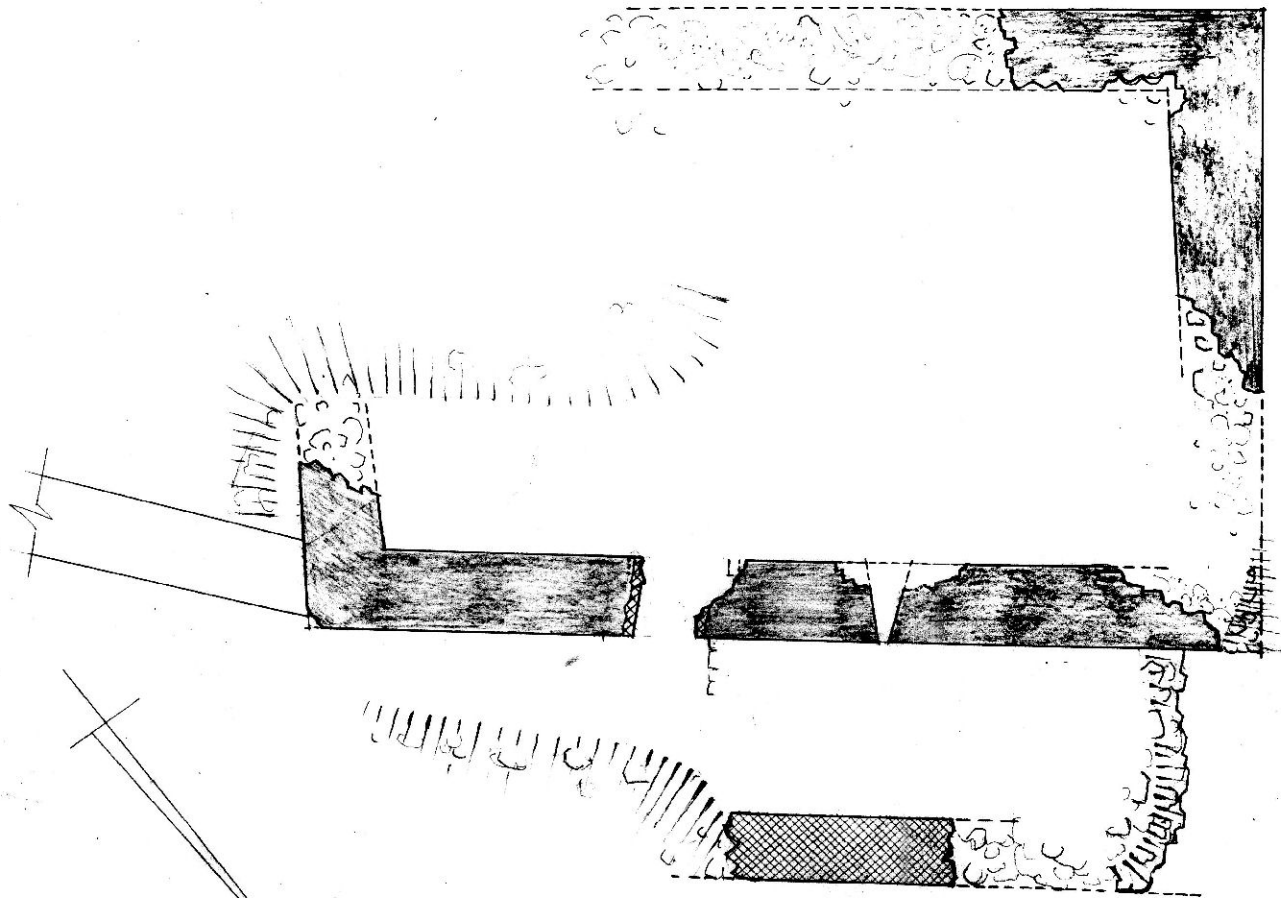
■ Period I  
▨ Period II







*first floor*

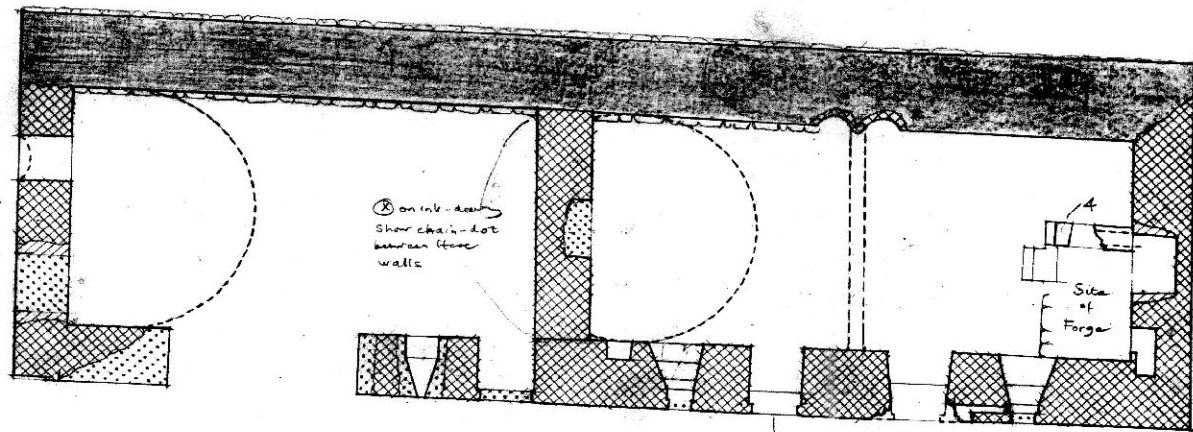


*first floor*

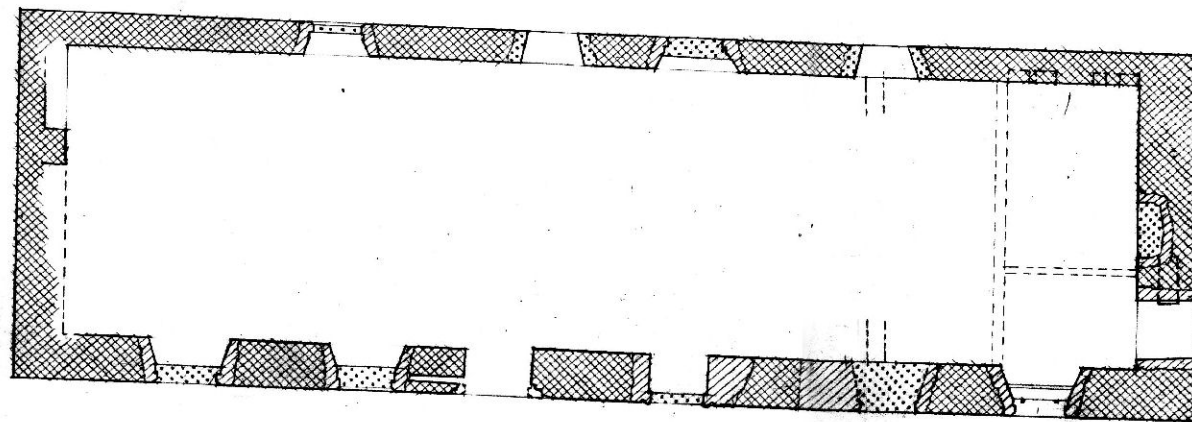


*ground plan*

-  late medieval
-  circa. 1600
-  circa 1700
-  19th. century



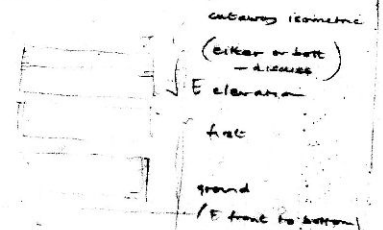
ground plan



first-floor plan

NB First-floor c. 1600 windows  
had 600mm daylight openings

Finished drawing for PSAS format  
(use finished drawing of Big Horse Inn, Dymally  
Elev. as a general model)



10.10.85  
 (3)  
 N