

New exhibits at Historylinks

By Caroline McMorran
caroline.mcmorran@hnmedia.co.uk

SEVERAL new exhibits have gone on display at Dornoch's Historylinks museum which reopened to the public on July 18 following lockdown.

Curator Lynne Mahoney said: "Staff and volunteers made a huge effort to ensure that Historylinks was good to go. So far visitor numbers have been excellent and we are very encouraged by people's response to the museum displays and the safety measures in place."

A sanitising station has been installed at the front door and a traffic light system introduced to regulate entry. Visitors are required to wear face coverings inside.

Volunteer Peter Wild has created a new outside display Domestic Life display with the largest item a laundry mangle gifted to the museum around 20 years ago. Along with the mangle is a wool dye pot, a set of quern stones and a knocking stone for grain preparation, plus a milk churn from Munro and Grant's dairy at Sandycroft, Dornoch.

A large scale model of a pre-clearance site at Dalnamein in the early 1800s is the centrepiece of an exhibition on the museum's longhouse project - it was made by volunteer David



The new outside display Domestic Life display created at Dornoch museum Historylinks by volunteer Peter Wild.

Mahoney and members of the Young Curators Club. The ongoing project, funded by the Heritage Lottery, aims to find out what life was really like for people living in Sutherland at that time.

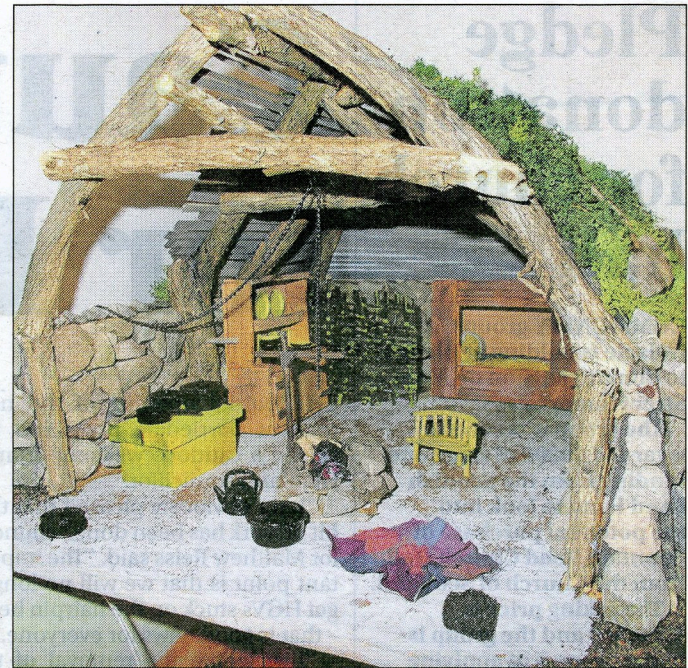
Objects produced at workshops run as part of the project can also be seen, including silver and wooden spoons, a drover's bonnet, leather purses and willow hurdles. All were made using authentic materials and

methods from the period.

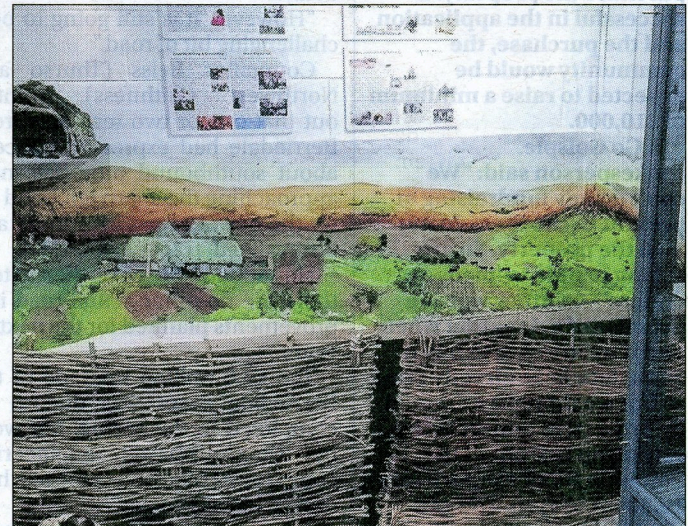
"It's a fantastic insight into 18th century life in Sutherland," said Ms Mahoney.

Back on display is the Katherine Gray silk dress, made around 1710 by Spitalfields weaver James Lehman. Katherine of Overskibo, reputedly wore the stunning dress to a ball attended by Bonnie Prince Charlie.

The museum is currently open every day from 10.30am-4pm.



The longhouse project was funded by the Heritage Lottery.



The large scale model of a pre-Clearance site at Dalnamein.